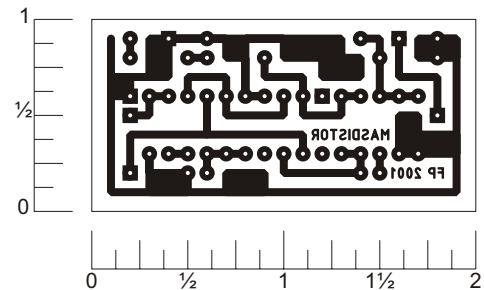
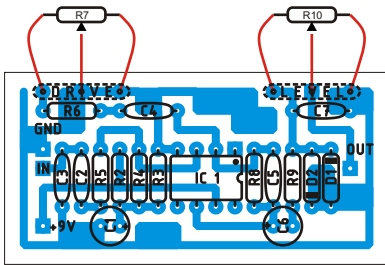


MAS DISTORTION

Rev.2.Mar.4.2002

You can build either the MXR Distortion+ or the DOD Overdrive 250 in this board. Try different kinds of diodes for clipping. These circuits are very similar, so much that they can be constructed around the same printed circuit board. Use the parts list to substitute with the values for the circuit you choose to build. Off board components except for the potentiometers are not shown on the layout. Registered trademarks are property of their owners.



MXR PARTS LIST

Resistors

R1 -
R2 - 1M
R3 - 1M
R4 - 1M
R5 - 10k
R6 - 4k7
R7 - 1M lin. pot.
R8 - 1M
R9 - 10k
R10 - 10k log. pot.

Capacitors

C1 - 1 μ F
C2 - 0.01 μ F
C3 - 0.001 μ F
C4 - 0.047 μ F
C5 - 10pF
C6 - 1 μ F
C7 - 0.001 μ F

ICs

IC1 - 741

DOD PARTS LIST

Resistors

R1 -
R2 - 20k
R3 - 20k
R4 - 1M
R5 - 10k
R6 - 47k
R7 - 500k lin. pot.
R8 - 1M
R9 - 10k
R10 - 100k log. pot

Capacitors

C1 - 10 μ F
C2 - 0.01 μ F
C3 -
C4 - 0.05 μ F
C5 -
C6 - 10 μ F
C7 - 0.001 μ F

ICs

IC1 - 741

Schematic

